

**Anti-CXCR5 Antibody**  
**Catalog # ABO11327****Specification**

---

**Anti-CXCR5 Antibody - Product Information**

Application	WB
Primary Accession	<a href="#">P32302</a>
Host	Rabbit
Reactivity	Human, Mouse, Rat
Clonality	Polyclonal
Format	Lyophilized

**Description**

Rabbit IgG polyclonal antibody for C-X-C chemokine receptor type 5(CXCR5) detection. Tested with WB in Human;Mouse;Rat.

**Reconstitution**

Add 0.2ml of distilled water will yield a concentration of 500ug/ml.

**Anti-CXCR5 Antibody - Additional Information**

**Gene ID** 643

**Other Names**

C-X-C chemokine receptor type 5, CXC-R5, CXCR-5, Burkitt lymphoma receptor 1, Monocyte-derived receptor 15, MDR-15, CD185, CXCR5, BLR1, MDR15

**Calculated MW**

41955 MW KDa

**Application Details**

Western blot, 0.1-0.5 µg/ml, Human, Rat, Mouse<br>

**Subcellular Localization**

Cell membrane; Multi-pass membrane protein.

**Tissue Specificity**

Expression in mature B-cells and Burkitt lymphoma cells.

**Protein Name**

C-X-C chemokine receptor type 5

**Contents**

Each vial contains 5mg BSA, 0.9mg NaCl, 0.2mg Na<sub>2</sub>HPO<sub>4</sub>, 0.05mg Thimerosal, 0.05mg NaN<sub>3</sub>.

**Immunogen**

A synthetic peptide corresponding to a sequence at the C-terminus of human CXCR5(358-372aa SSLSESENATSLTTF), identical to the related rat and mouse sequences.

**Purification**

Immunogen affinity purified.

**Cross Reactivity**

No cross reactivity with other proteins

**Storage**

**At -20°C for one year. After reconstitution, at 4°C for one month. It can also be aliquotted and stored frozen at -20°C for a longer time. Avoid repeated freezing and thawing.**

**Sequence Similarities**

Belongs to the G-protein coupled receptor 1 family.

**Anti-CXCR5 Antibody - Protein Information**

**Name** CXCR5

**Synonyms** BLR1, MDR15

**Function**

Cytokine receptor that binds to B-lymphocyte chemoattractant (BLC). Involved in B-cell migration into B-cell follicles of spleen and Peyer patches but not into those of mesenteric or peripheral lymph nodes. May have a regulatory function in Burkitt lymphoma (BL) lymphomagenesis and/or B-cell differentiation.

**Cellular Location**

Cell membrane; Multi-pass membrane protein.

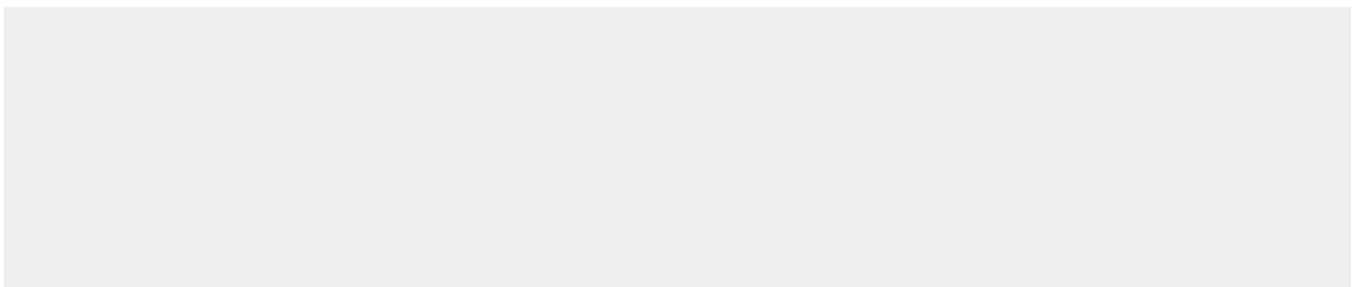
**Tissue Location**

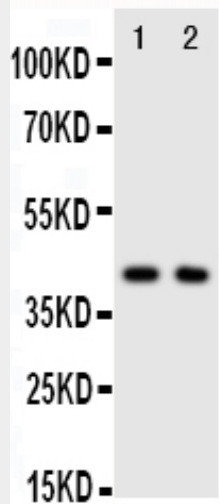
Expression in mature B-cells and Burkitt lymphoma cells

**Anti-CXCR5 Antibody - Protocols**

Provided below are standard protocols that you may find useful for product applications.

- [Western Blot](#)
- [Blocking Peptides](#)
- [Dot Blot](#)
- [Immunohistochemistry](#)
- [Immunofluorescence](#)
- [Immunoprecipitation](#)
- [Flow Cytometry](#)
- [Cell Culture](#)

**Anti-CXCR5 Antibody - Images**



Anti-CXCR5 antibody, ABO11327, Western blotting Lane 1: Rat Spleen Tissue Lysate Lane 2: HELA Cell Lysate

### Anti-CXCR5 Antibody - Background

CXCR5 (Chemokine CXC Motif Receptor 5), also known as BLR1, is a G protein-coupled seven transmembrane receptor for chemokine CXCL13 (also known as BLC) and belongs to the CXC chemokine receptor family. In humans, the CXC-R5 protein is encoded by the CXCR5 gene. The gene plays an essential role in B cell migration. Reif et al. (2002) concluded that their findings defined the mechanism of B-cell relocation in response to antigen, and established that cell position in vivo can be determined by the balance of responsiveness to chemoattractants made in separate but adjacent zones. Chan et al. (2003) investigated the expression of chemokines and chemokine receptors in eyes with primary intraocular B-cell lymphoma (PIOL).